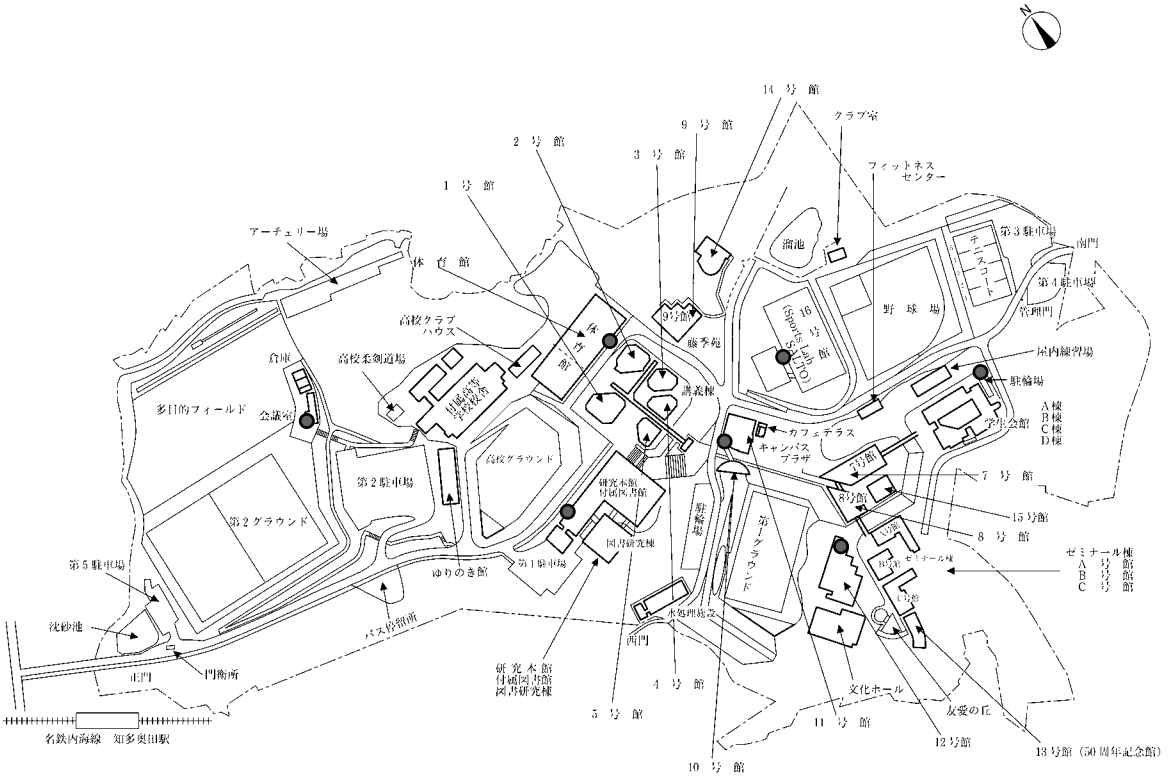


美浜キャンパス施設配置図

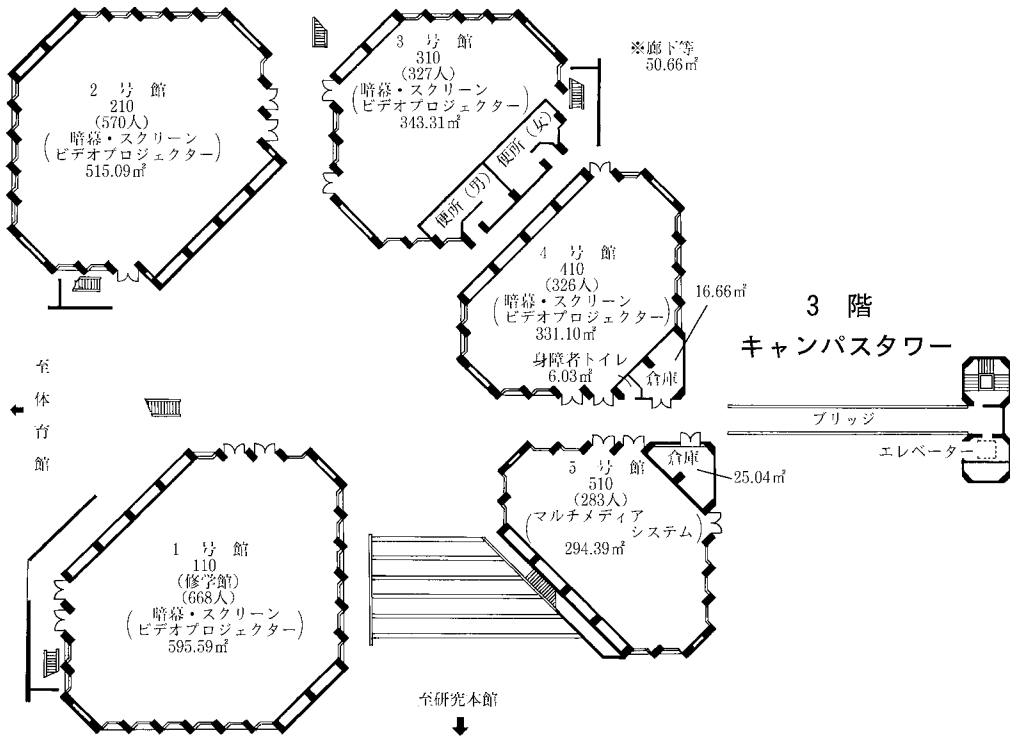
● 美浜キャンパス



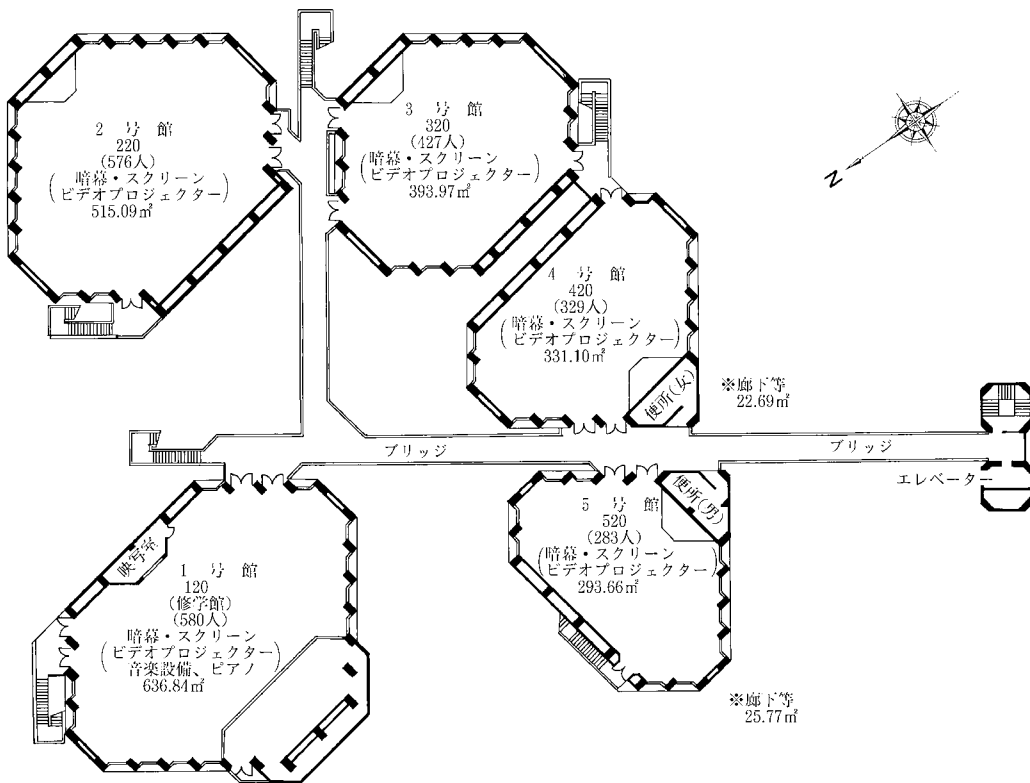
●…AED 設置場所

● 1号～5号館

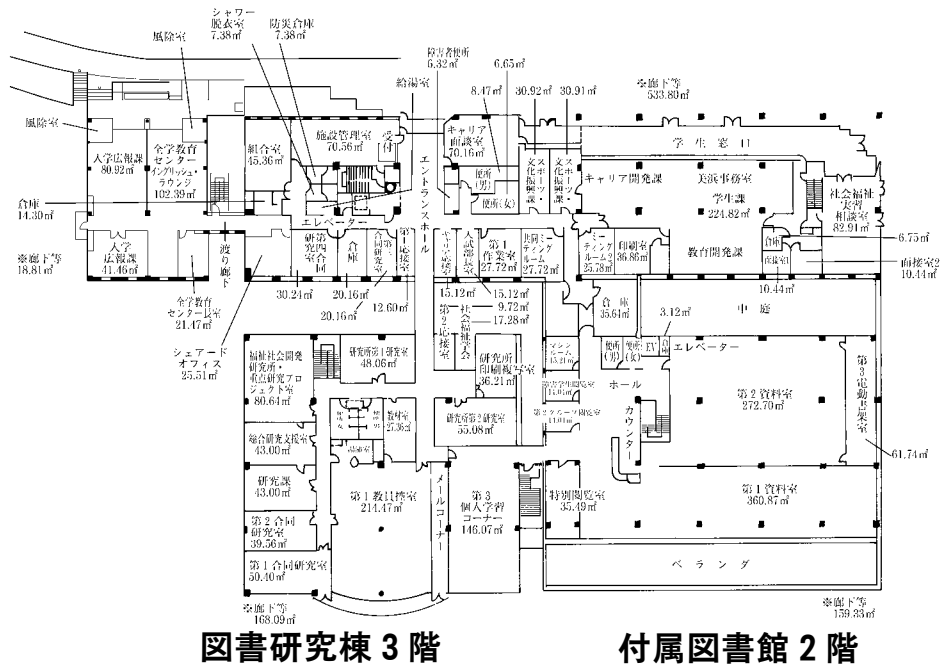
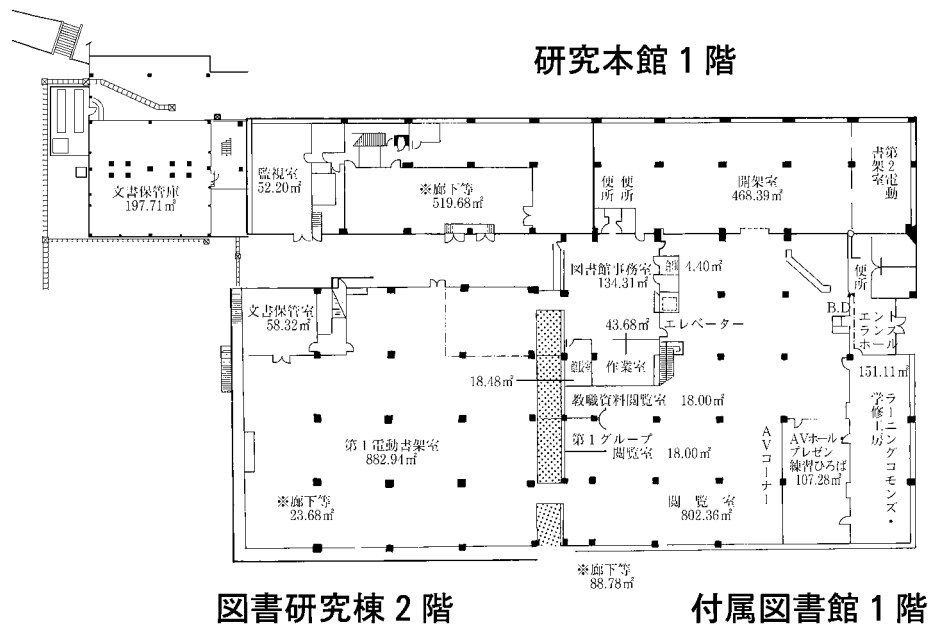
1 階



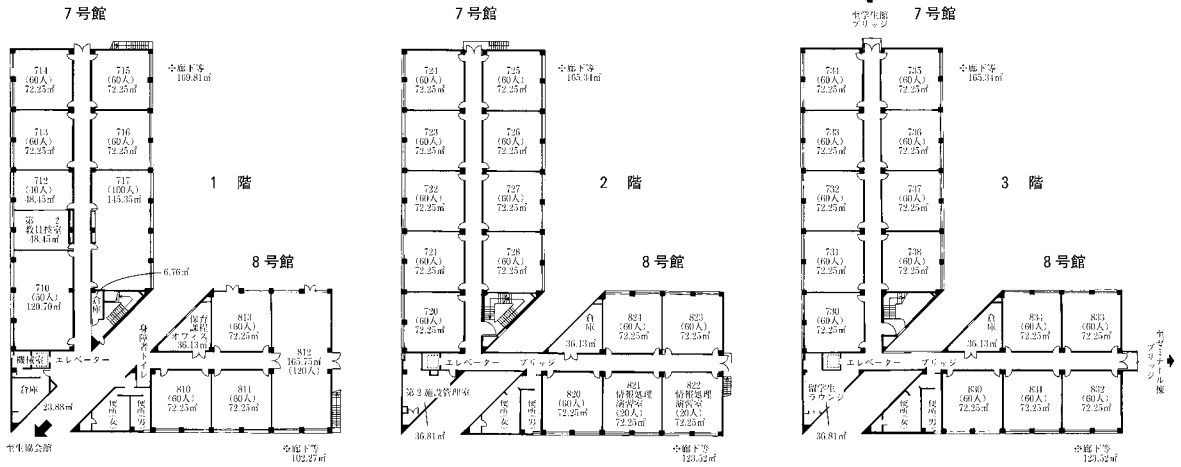
2 階



● 研究本館・附属図書館

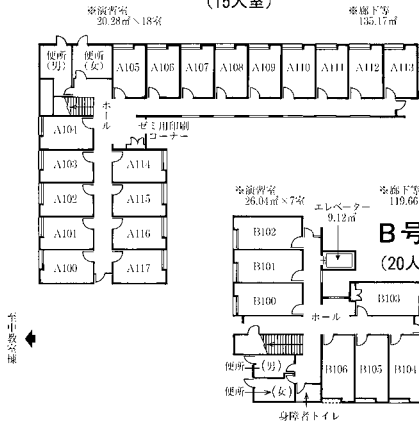


7・8号館

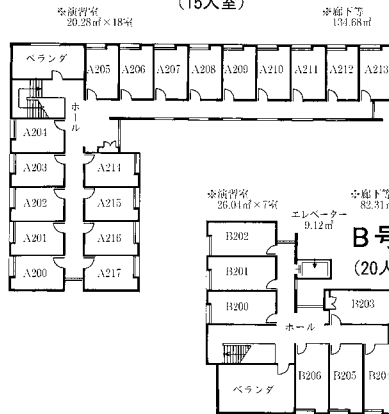


ゼミナール棟

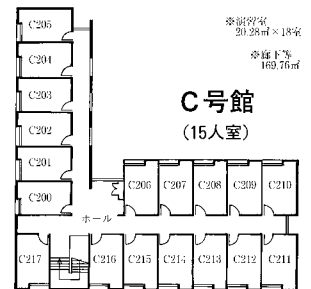
A号館 (15人室)



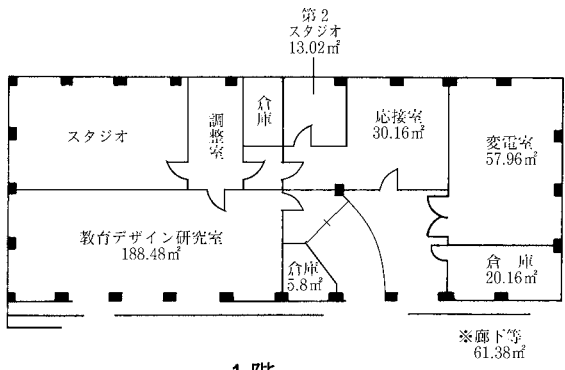
A号館 (15人室)



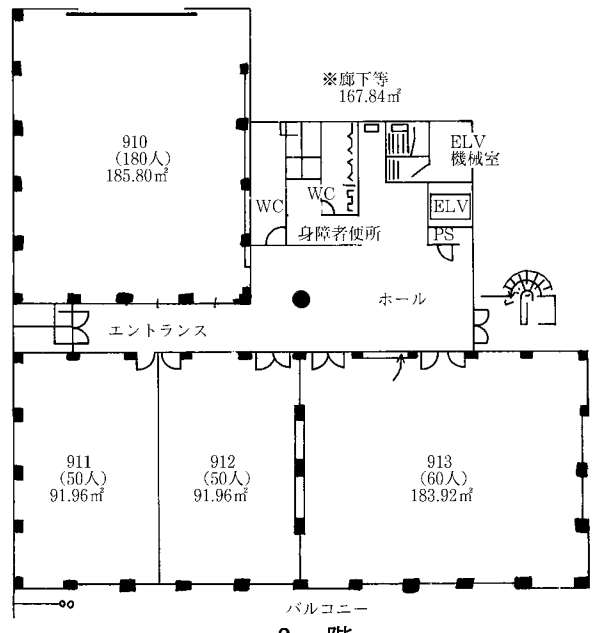
2階



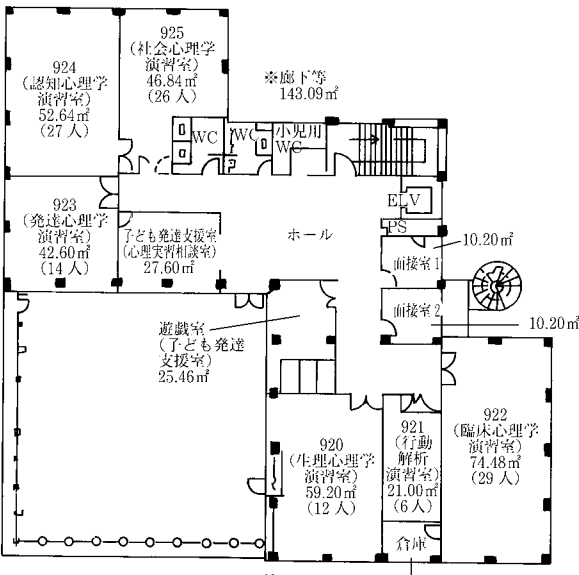
9号館



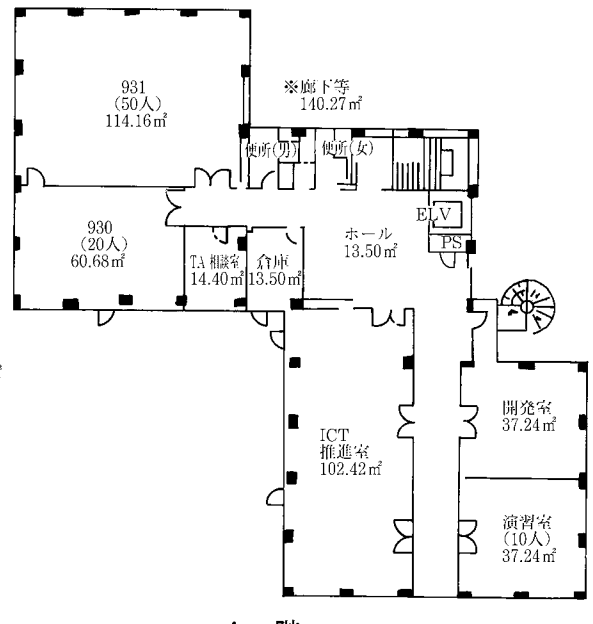
1階



2階

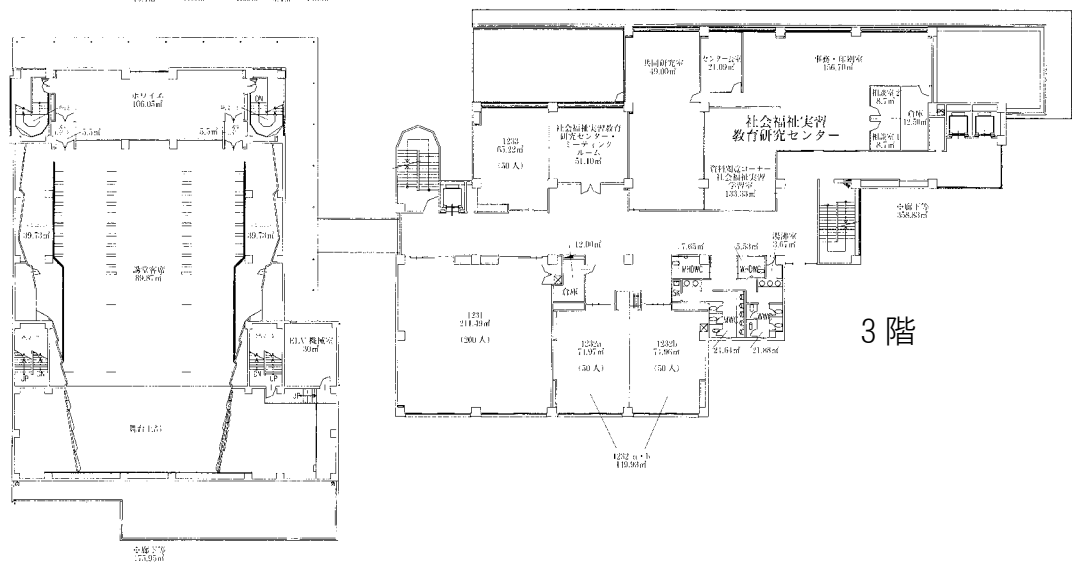
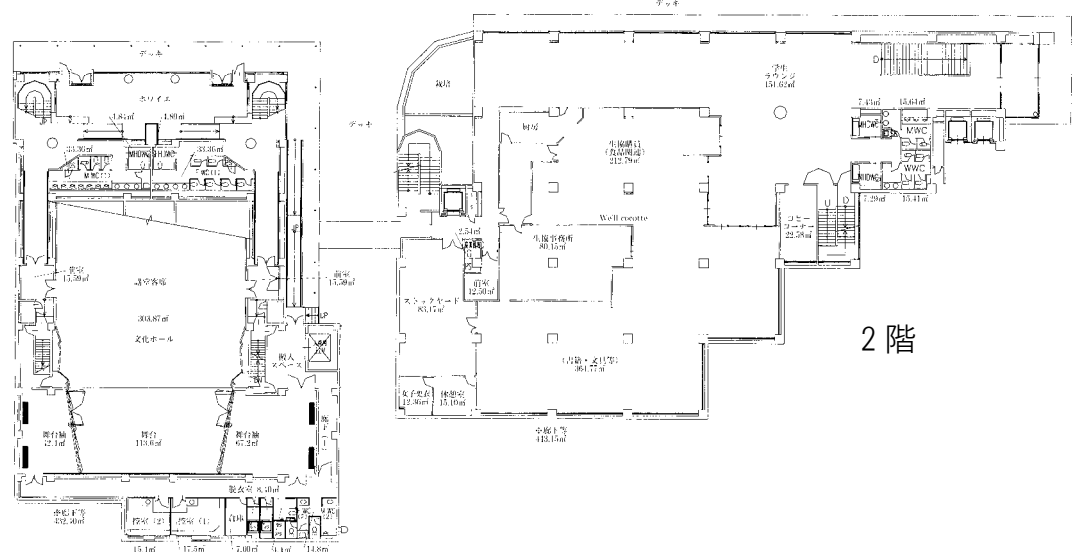
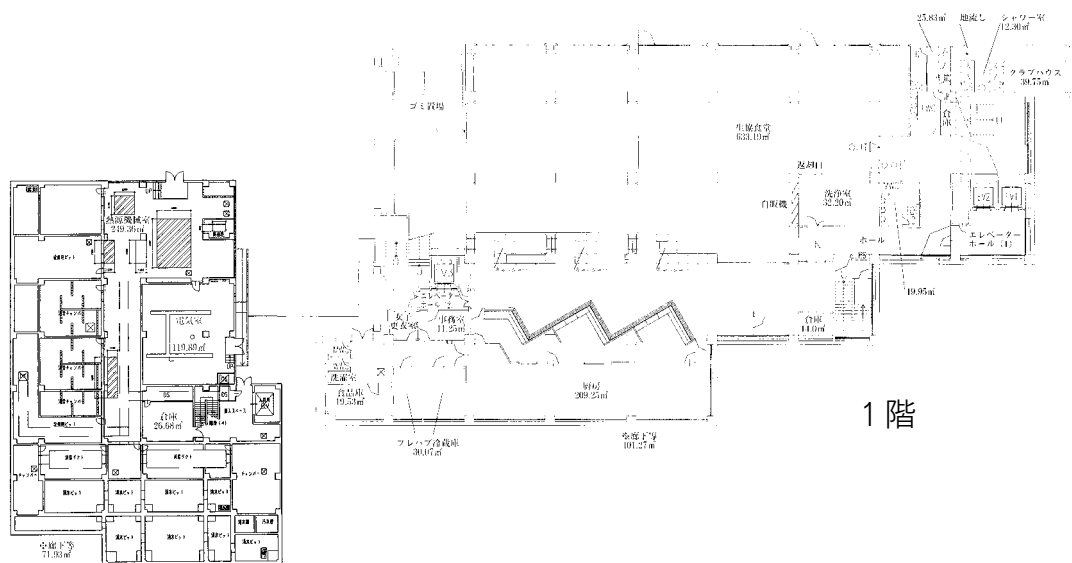


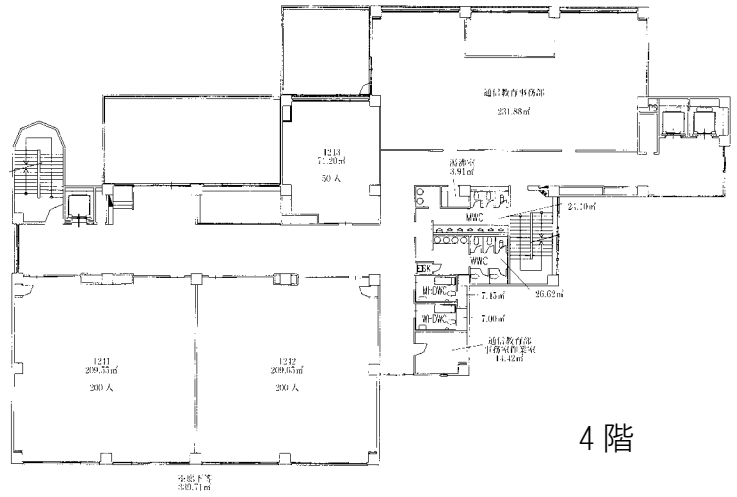
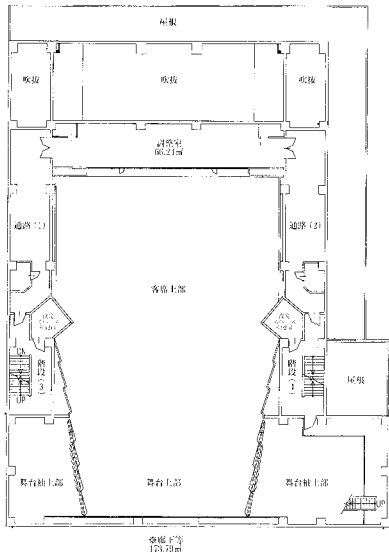
3階



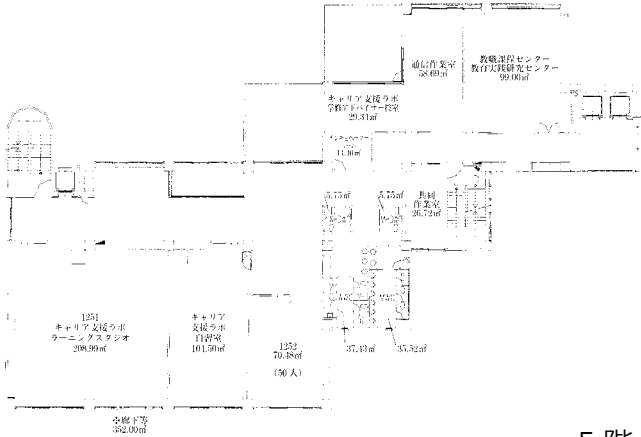
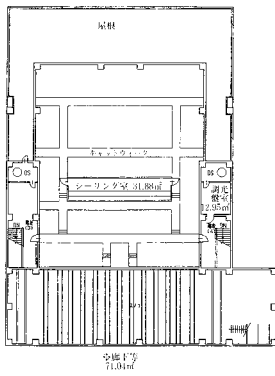
4階

12号館（キャンパスセンター棟・文化ホール）

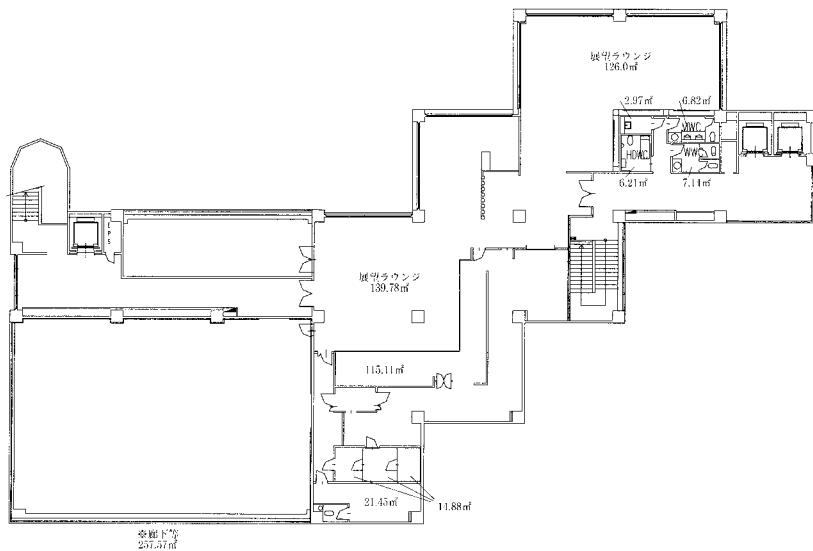




4階

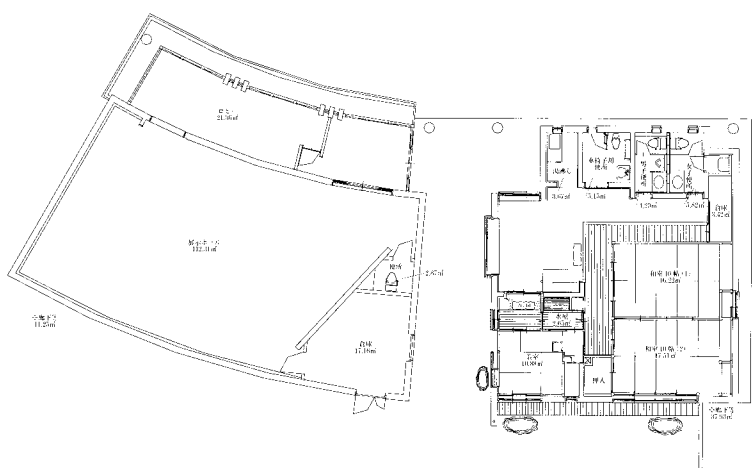


5階

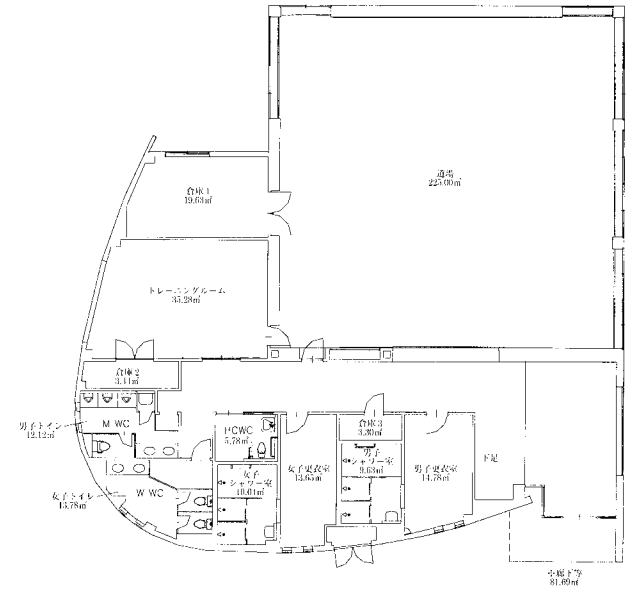


6階

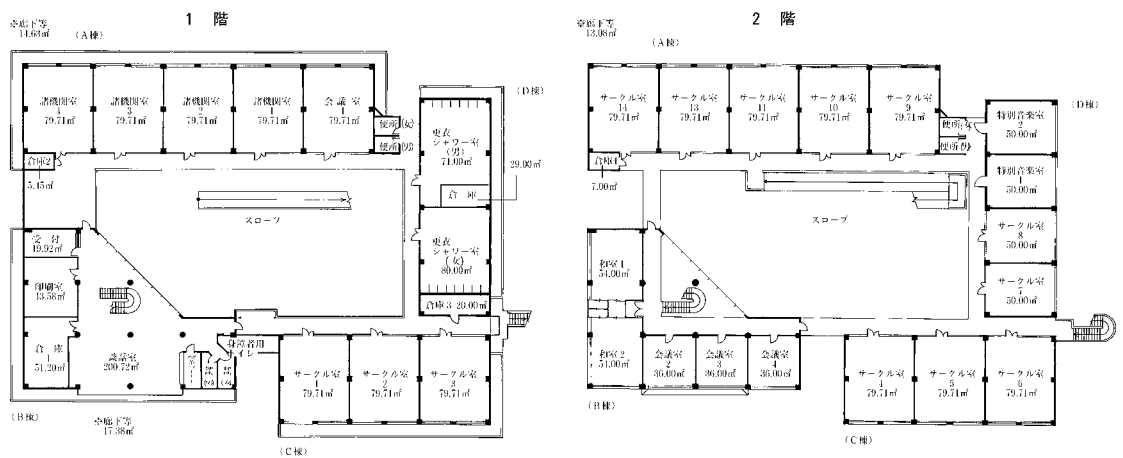
13号館 (50周年記念館棟)



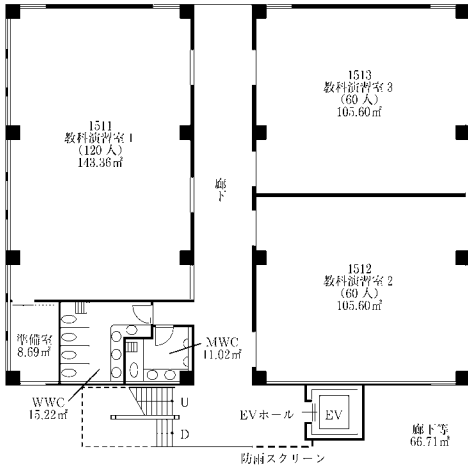
14号館 (武道場)



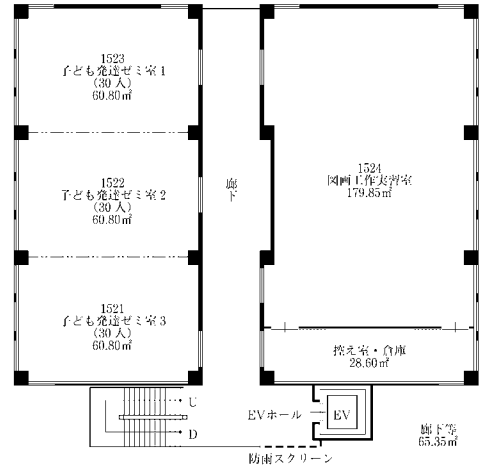
学生会館



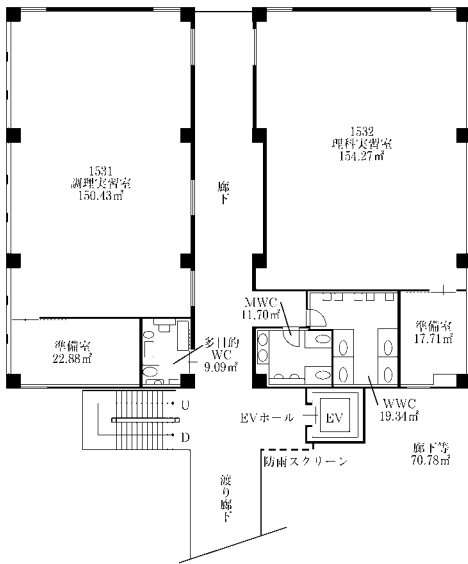
15号館



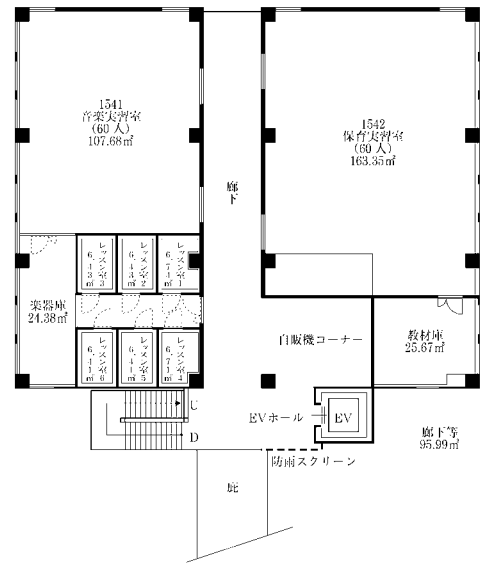
1階平面図



2階平面図



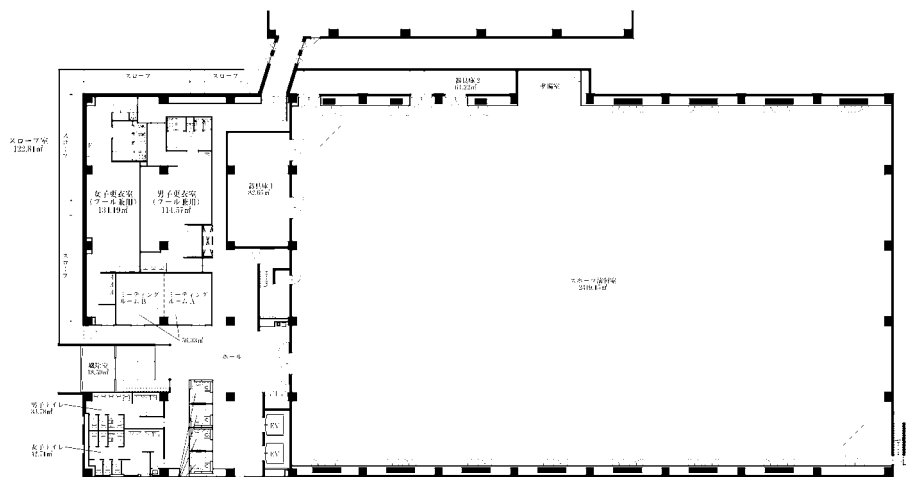
3階平面図



4階平面図

16号館 (Sports Lab SALTO)

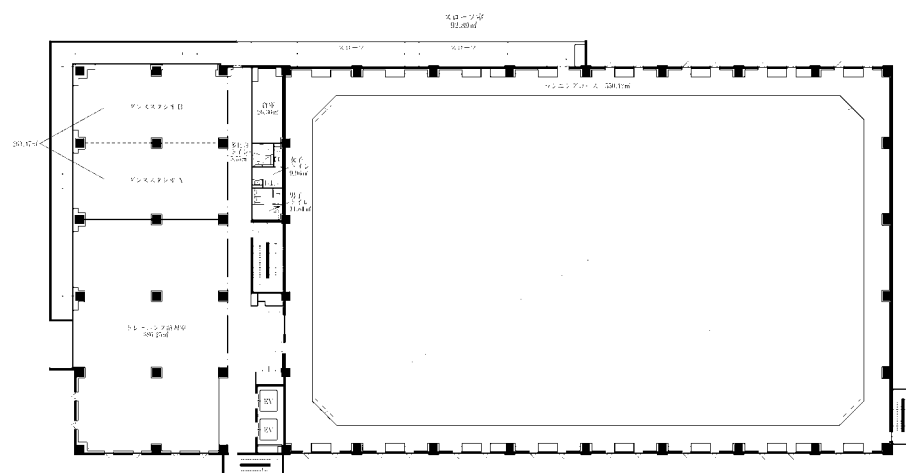
1階平面図



1階平面図 (登記面積 3,669.92㎡)

※F7: 1,535.4㎡

2階平面図

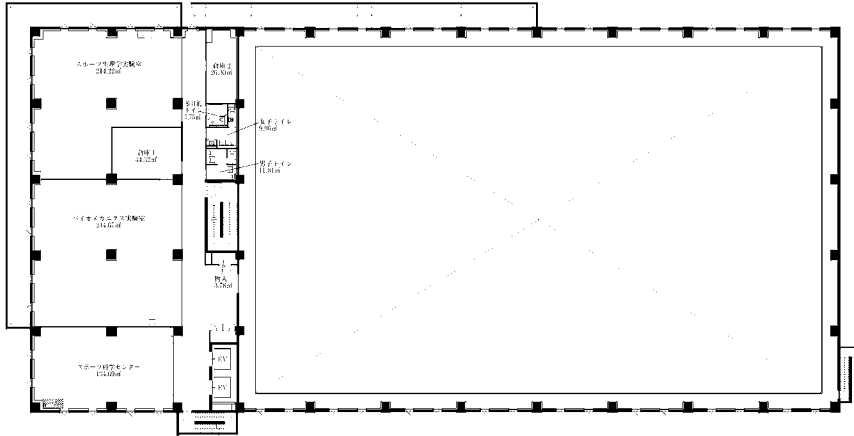


2階平面図 (登記面積 1,571.34㎡)

※F7: 296.0㎡

16号館 (Sports Lab SALTO)

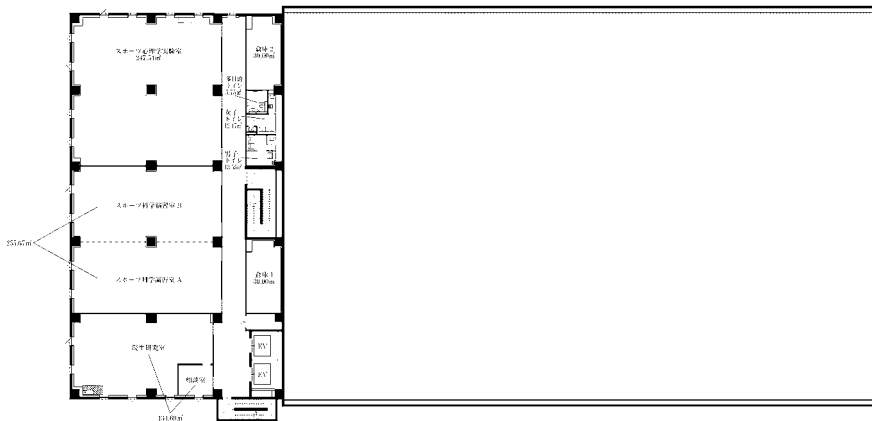
3階平面図



3階平面図 (登記面積 886.95㎡)

床下等: 191.45㎡

4階平面図



4階平面図 (登記面積 907.20㎡)

床下等: 172.81㎡

● 16号館 (Sports Lab SALTO)

プール棟平面図

